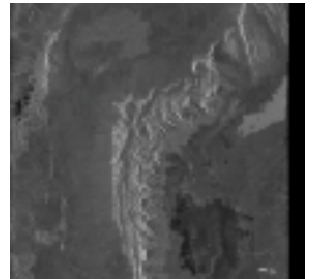


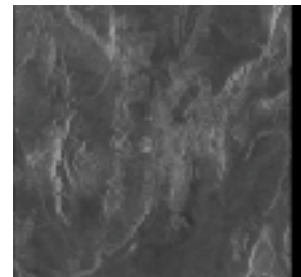
Id: 1
Sensor: ASAR/IM
Status: Archived
Stop: 2004-04-16 04:57:04.33
Track: 48
Swath: I2
Mosaic: false
Medium: DVD
Processing Options: Processing: L0 (ASA_IM__OP),QualityOfService: STANDARD
Scene Type: Floating Scene
Scene Stop: 2004-04-16 04:57:04.32
Selected Frame: 657

Mission: Envisat
Product: ASA_IM
Start: 2004-04-16 04:56:49.24
Orbit: 11124
Frame: 657
Pass: A
Order: true
Delivery: mail



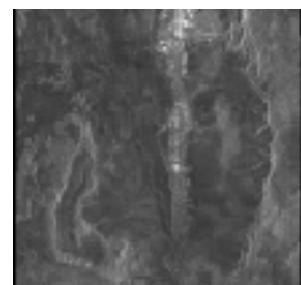
Id: 2
Sensor: ASAR/IM
Status: Archived
Stop: 2004-04-16 04:57:19.42
Track: 48
Swath: I2
Mosaic: false
Medium: DVD
Processing Options: Processing: L0 (ASA_IM__0P),QualityOfService: STANDARD
Scene Type: Floating Scene
Scene Stop: 2004-04-16 04:57:19.41 Scene centre: +34°05'10" -106°55'39"
Selected Frame: 675

Mission: Envisat
Product: ASA_IM
Start: 2004-04-16 04:57:04.33
Orbit: 11124
Frame: 675
Pass: A
Order: true
Delivery: mail



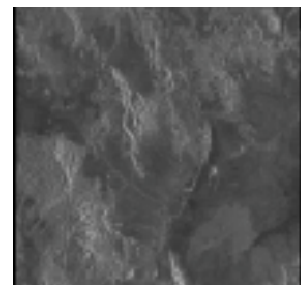
Id: 3
Sensor: ASAR/IM
Status: Archived
Stop: 2005-07-18 17:18:34.97
Track: 98
Swath: I2
Mosaic: false
Medium: DVD
Processing Options: Processing: L0 (ASA_IM__0P),QualityOfService: STANDARD
Scene Type: Floating Scene
Scene Stop: 2005-07-18 17:18:34.96 Scene centre: +34°42'51" -106°46'02"
Selected Frame: 2907

Mission: Envisat
Product: ASA_IM
Start: 2005-07-18 17:18:19.88
Orbit: 17687
Frame: 2907
Pass: D
Order: true
Delivery: mail



Id: 4
Sensor: ASAR/IM
Status: Archived
Stop: 2005-07-18 17:18:50.06
Track: 98
Swath: I2
Mosaic: false
Medium: DVD
Processing Options: Processing: L0 (ASA_IM__0P),QualityOfService: STANDARD
Scene Type: Floating Scene
Scene Stop: 2005-07-18 17:18:50.05 Scene centre: +33°49'09" -106°59'32"
Selected Frame: 2925

Mission: Envisat
Product: ASA_IM
Start: 2005-07-18 17:18:34.97
Orbit: 17687
Frame: 2925
Pass: D
Order: true
Delivery: mail



Id: 5
Sensor: ASAR/IM
Status: Archived
Stop: 2006-02-10 04:56:57.89
Track: 48
Swath: I2
Mosaic: false
Medium: DVD
Processing Options: Processing: L0 (ASA_IM__0P),QualityOfService: STANDARD
Scene Type: Floating Scene
Scene Stop: 2006-02-10 04:56:57.88 Scene centre: +33°11'47" -106°42'09"
Selected Frame: 657

Mission: Envisat
Product: ASA_IM
Start: 2006-02-10 04:56:42.80
Orbit: 20643
Frame: 657
Pass: A
Order: true
Delivery: mail



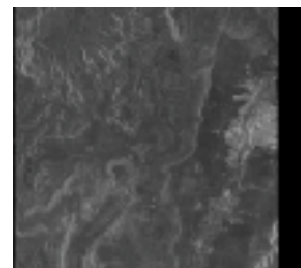
Id: 6
Sensor: ASAR/IM
Status: Archived
Stop: 2006-02-10 04:57:12.98
Track: 48
Swath: I2
Mosaic: false
Medium: DVD
Processing Options: Processing: L0 (ASA_IM__0P),QualityOfService: STANDARD
Scene Type: Floating Scene
Scene Stop: 2006-02-10 04:57:12.97 Scene centre: +34°05'11" -106°55'39"
Selected Frame: 675

Mission: Envisat
Product: ASA_IM
Start: 2006-02-10 04:56:57.89
Orbit: 20643
Frame: 675
Pass: A
Order: true
Delivery: mail



Id: 7
Sensor: ASAR/IM
Status: Archived
Stop: 2006-02-10 04:57:28.07
Track: 48
Swath: I2
Mosaic: false
Medium: DVD
Processing Options: Processing: L0 (ASA_IM__0P),QualityOfService: STANDARD
Scene Type: Floating Scene
Scene Stop: 2006-02-10 04:57:28.06 Scene centre: +34°58'35" -107°09'00"
Selected Frame: 693

Mission: Envisat
Product: ASA_IM
Start: 2006-02-10 04:57:12.98
Orbit: 20643
Frame: 693
Pass: A
Order: true
Delivery: mail



Id: 8
Sensor: ASAR/IM
Status: Archived
Stop: 2006-03-17 04:56:55.85
Track: 48
Swath: I2
Mosaic: false
Medium: DVD
Processing Options: Processing: L0 (ASA_IM__0P),QualityOfService: STANDARD
Scene Type: Floating Scene
Scene Stop: 2006-03-17 04:56:55.84 Scene centre: +33°11'47" -106°42'09"
Selected Frame: 657

Mission: Envisat
Product: ASA_IM
Start: 2006-03-17 04:56:40.76
Orbit: 21144
Frame: 657
Pass: A
Order: true
Delivery: mail



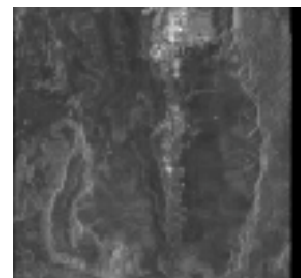
Id: 9
Sensor: ASAR/IM
Status: Archived
Stop: 2006-04-21 04:56:59.90
Track: 48
Swath: I2
Mosaic: false
Medium: DVD
Processing Options: Processing: L0 (ASA_IM__0P),QualityOfService: STANDARD
Scene Type: Floating Scene
Scene Stop: 2006-04-21 04:56:59.89 Scene centre: +33°11'47" -106°42'09"
Selected Frame: 657

Mission: Envisat
Product: ASA_IM
Start: 2006-04-21 04:56:44.81
Orbit: 21645
Frame: 657
Pass: A
Order: true
Delivery: mail



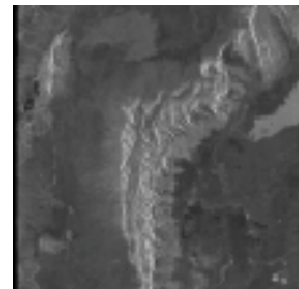
Id: 10
Sensor: ASAR/IM
Status: Archived
Stop: 2006-04-24 17:18:23.23
Track: 98
Swath: I2
Mosaic: false
Medium: DVD
Processing Options: Processing: L0 (ASA_IM__0P),QualityOfService: STANDARD
Scene Type: Floating Scene
Scene Stop: 2006-04-24 17:18:23.22 Scene centre: +34°42'51" -106°46'02"
Selected Frame: 2907

Mission: Envisat
Product: ASA_IM
Start: 2006-04-24 17:18:08.14
Orbit: 21695
Frame: 2907
Pass: D
Order: true
Delivery: mail



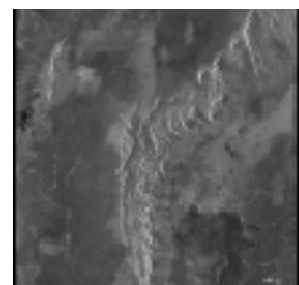
Id: 11
Sensor: ASAR/IM
Status: Archived
Stop: 2006-05-26 04:57:02.04
Track: 48
Swath: I2
Mosaic: false
Medium: DVD
Processing Options: Processing: L0 (ASA_IM__0P),QualityOfService: STANDARD
Scene Type: Floating Scene
Scene Stop: 2006-05-26 04:57:02.03
Selected Frame: 657

Mission: Envisat
Product: ASA_IM
Start: 2006-05-26 04:56:46.95
Orbit: 22146
Frame: 657
Pass: A
Order: true
Delivery: mail
Scene Start: 2006-05-26 04:56:46.95
Scene centre: +33°11'47" -106°42'09"



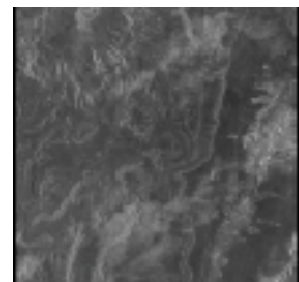
Id: 12
Sensor: ASAR/IM
Status: Archived
Stop: 2006-06-30 04:57:07.47
Track: 48
Swath: I2
Mosaic: false
Medium: DVD
Processing Options: Processing: L0 (ASA_IM__0P),QualityOfService: STANDARD
Scene Type: Floating Scene
Scene Stop: 2006-06-30 04:57:07.46
Selected Frame: 657

Mission: Envisat
Product: ASA_IM
Start: 2006-06-30 04:56:52.38
Orbit: 22647
Frame: 657
Pass: A
Order: true
Delivery: mail
Scene Start: 2006-06-30 04:56:52.38
Scene centre: +33°11'47" -106°42'09"



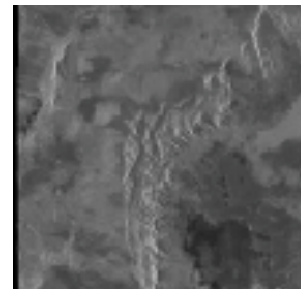
Id: 13
Sensor: ASAR/IM
Status: Archived
Stop: 2006-06-30 04:57:37.65
Track: 48
Swath: I2
Mosaic: false
Medium: DVD
Processing Options: Processing: L0 (ASA_IM__0P),QualityOfService: STANDARD
Scene Type: Floating Scene
Scene Stop: 2006-06-30 04:57:37.64
Selected Frame: 693

Mission: Envisat
Product: ASA_IM
Start: 2006-06-30 04:57:22.56
Orbit: 22647
Frame: 693
Pass: A
Order: true
Delivery: mail
Scene Start: 2006-06-30 04:57:22.56
Scene centre: +34°58'35" -107°09'00"



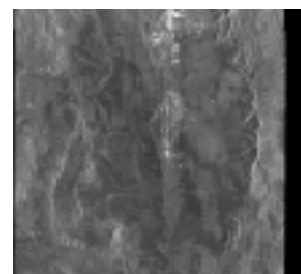
Id: 14
Sensor: ASAR/IM
Status: Archived
Stop: 2006-08-04 04:57:08.45
Track: 48
Swath: I2
Mosaic: false
Medium: DVD
Processing Options: Processing: L0 (ASA_IM__0P),QualityOfService: STANDARD
Scene Type: Floating Scene
Scene Stop: 2006-08-04 04:57:08.44 Scene centre: +33°11'47" -106°42'09"
Selected Frame: 657

Mission: Envisat
Product: ASA_IM
Start: 2006-08-04 04:56:53.36
Orbit: 23148
Frame: 657
Pass: A
Order: true
Delivery: mail



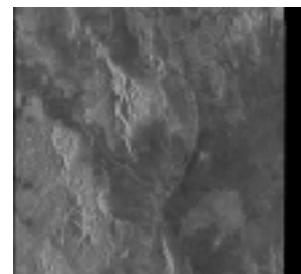
Id: 15
Sensor: ASAR/IM
Status: Archived
Stop: 2006-08-07 17:18:30.87
Track: 98
Swath: I2
Mosaic: false
Medium: DVD
Processing Options: Processing: L0 (ASA_IM__0P),QualityOfService: STANDARD
Scene Type: Floating Scene
Scene Stop: 2006-08-07 17:18:30.86 Scene centre: +34°42'51" -106°46'02"
Selected Frame: 2907

Mission: Envisat
Product: ASA_IM
Start: 2006-08-07 17:18:15.78
Orbit: 23198
Frame: 2907
Pass: D
Order: true
Delivery: mail



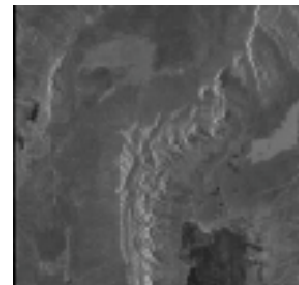
Id: 16
Sensor: ASAR/IM
Status: Archived
Stop: 2006-08-07 17:18:45.96
Track: 98
Swath: I2
Mosaic: false
Medium: DVD
Processing Options: Processing: L0 (ASA_IM__0P),QualityOfService: STANDARD
Scene Type: Floating Scene
Scene Stop: 2006-08-07 17:18:45.95 Scene centre: +33°49'09" -106°59'32"
Selected Frame: 2925

Mission: Envisat
Product: ASA_IM
Start: 2006-08-07 17:18:30.87
Orbit: 23198
Frame: 2925
Pass: D
Order: true
Delivery: mail



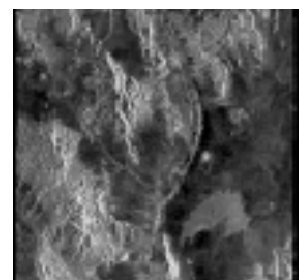
Id: 17
Sensor: ASAR/IM
Status: Archived
Stop: 2006-10-13 04:57:06.92
Track: 48
Swath: I2
Mosaic: false
Medium: DVD
Processing Options: Processing: L0 (ASA_IM__0P),QualityOfService: STANDARD
Scene Type: Floating Scene
Scene Stop: 2006-10-13 04:57:06.91 Scene centre: +33°11'47" -106°42'09"
Selected Frame: 657

Mission: Envisat
Product: ASA_IM
Start: 2006-10-13 04:56:51.83
Orbit: 24150
Frame: 657
Pass: A
Order: true
Delivery: mail



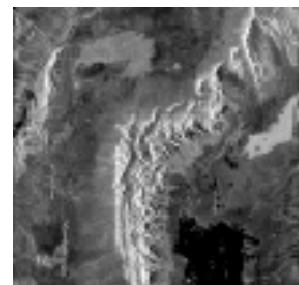
Id: 18
Sensor: ASAR/IM
Status: Archived
Stop: 2006-11-20 17:18:44.22
Track: 98
Swath: I2
Mosaic: false
Medium: DVD
Processing Options: Processing: L0 (ASA_IM__0P),QualityOfService: STANDARD
Scene Type: Floating Scene
Scene Stop: 2006-11-20 17:18:44.21 Scene centre: +33°49'09" -106°59'32"
Selected Frame: 2925

Mission: Envisat
Product: ASA_IM
Start: 2006-11-20 17:18:29.13
Orbit: 24701
Frame: 2925
Pass: D
Order: true
Delivery: mail



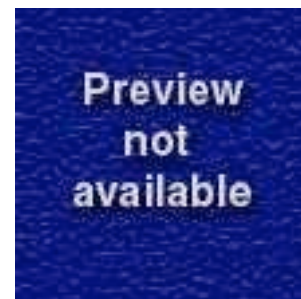
Id: 19
Sensor: ASAR/IM
Status: Archived
Stop: 2006-12-22 04:57:04.61
Track: 48
Swath: I2
Mosaic: false
Medium: DVD
Processing Options: Processing: L0 (ASA_IM__0P),QualityOfService: STANDARD
Scene Type: Floating Scene
Scene Stop: 2006-12-22 04:57:04.60 Scene centre: +33°11'47" -106°42'09"
Selected Frame: 657

Mission: Envisat
Product: ASA_IM
Start: 2006-12-22 04:56:49.52
Orbit: 25152
Frame: 657
Pass: A
Order: true
Delivery: mail



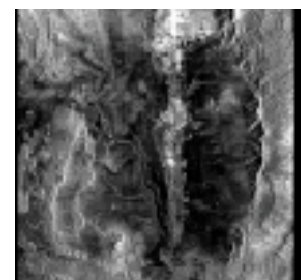
Id: 20
Sensor: ASAR/IM
Status: Archived
Stop: 2007-01-26 04:56:58.28
Track: 48
Swath: I2
Mosaic: false
Medium: DVD
Processing Options: Processing: L0 (ASA_IM__0P),QualityOfService: STANDARD
Scene Type: Floating Scene
Scene Stop: 2007-01-26 04:56:58.27
Selected Frame: 657

Mission: Envisat
Product: ASA_IM
Start: 2007-01-26 04:56:43.19
Orbit: 25653
Frame: 657
Pass: A
Order: true
Delivery: mail



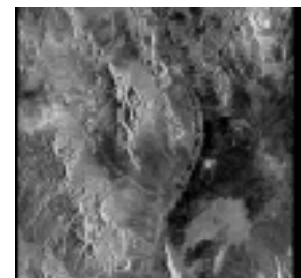
Id: 21
Sensor: ASAR/IM
Status: Archived
Stop: 2007-01-29 17:18:21.56
Track: 98
Swath: I2
Mosaic: false
Medium: DVD
Processing Options: Processing: L0 (ASA_IM__0P),QualityOfService: STANDARD
Scene Type: Floating Scene
Scene Stop: 2007-01-29 17:18:21.55
Selected Frame: 2907

Mission: Envisat
Product: ASA_IM
Start: 2007-01-29 17:18:06.47
Orbit: 25703
Frame: 2907
Pass: D
Order: true
Delivery: mail



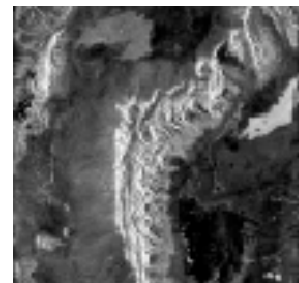
Id: 22
Sensor: ASAR/IM
Status: Archived
Stop: 2007-01-29 17:18:36.65
Track: 98
Swath: I2
Mosaic: false
Medium: DVD
Processing Options: Processing: L0 (ASA_IM__0P),QualityOfService: STANDARD
Scene Type: Floating Scene
Scene Stop: 2007-01-29 17:18:36.64
Selected Frame: 2925

Mission: Envisat
Product: ASA_IM
Start: 2007-01-29 17:18:21.56
Orbit: 25703
Frame: 2925
Pass: D
Order: true
Delivery: mail



Id: 23
Sensor: ASAR/IM
Status: Archived
Stop: 2007-03-02 04:57:01.11
Track: 48
Swath: I2
Mosaic: false
Medium: DVD
Processing Options: Processing: L0 (ASA_IM__0P),QualityOfService: STANDARD
Scene Type: Floating Scene
Scene Stop: 2007-03-02 04:57:01.10
Selected Frame: 657

Mission: Envisat
Product: ASA_IM
Start: 2007-03-02 04:56:46.02
Orbit: 26154
Frame: 657
Pass: A
Order: true
Delivery: mail
Scene Start: 2007-03-02 04:56:46.02
Scene centre: +33°11'47" -106°42'09"



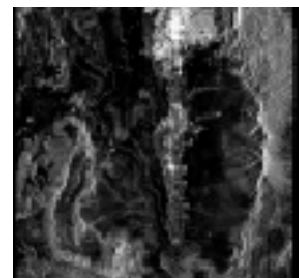
Id: 24
Sensor: ASAR/IM
Status: Archived
Stop: 2007-03-02 04:57:16.20
Track: 48
Swath: I2
Mosaic: false
Medium: DVD
Processing Options: Processing: L0 (ASA_IM__0P),QualityOfService: STANDARD
Scene Type: Floating Scene
Scene Stop: 2007-03-02 04:57:16.19
Selected Frame: 675

Mission: Envisat
Product: ASA_IM
Start: 2007-03-02 04:57:01.11
Orbit: 26154
Frame: 675
Pass: A
Order: true
Delivery: mail
Scene Start: 2007-03-02 04:57:01.11
Scene centre: +34°05'11" -106°55'39"



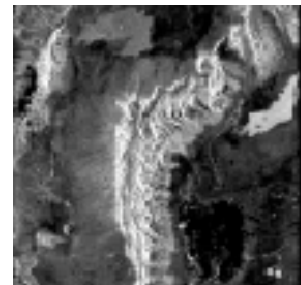
Id: 25
Sensor: ASAR/IM
Status: Archived
Stop: 2007-03-05 17:18:23.62
Track: 98
Swath: I2
Mosaic: false
Medium: DVD
Processing Options: Processing: L0 (ASA_IM__0P),QualityOfService: STANDARD
Scene Type: Floating Scene
Scene Stop: 2007-03-05 17:18:23.61
Selected Frame: 2907

Mission: Envisat
Product: ASA_IM
Start: 2007-03-05 17:18:08.53
Orbit: 26204
Frame: 2907
Pass: D
Order: true
Delivery: mail
Scene Start: 2007-03-05 17:18:08.53
Scene centre: +34°42'51" -106°46'02"



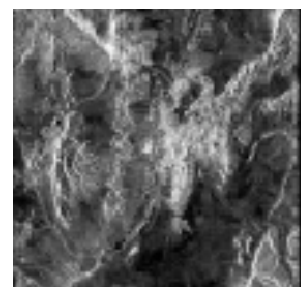
Id: 26
Sensor: ASAR/IM
Status: Archived
Stop: 2007-04-06 04:56:57.78
Track: 48
Swath: I2
Mosaic: false
Medium: DVD
Processing Options: Processing: L0 (ASA_IM__0P),QualityOfService: STANDARD
Scene Type: Floating Scene
Scene Stop: 2007-04-06 04:56:57.77
Selected Frame: 657

Mission: Envisat
Product: ASA_IM
Start: 2007-04-06 04:56:42.69
Orbit: 26655
Frame: 657
Pass: A
Order: true
Delivery: mail
Scene Start: 2007-04-06 04:56:42.69
Scene centre: +33°11'47" -106°42'09"



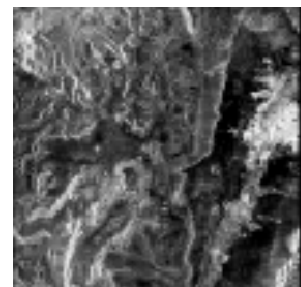
Id: 27
Sensor: ASAR/IM
Status: Archived
Stop: 2007-04-06 04:57:12.87
Track: 48
Swath: I2
Mosaic: false
Medium: DVD
Processing Options: Processing: L0 (ASA_IM__0P),QualityOfService: STANDARD
Scene Type: Floating Scene
Scene Stop: 2007-04-06 04:57:12.86
Selected Frame: 675

Mission: Envisat
Product: ASA_IM
Start: 2007-04-06 04:56:57.78
Orbit: 26655
Frame: 675
Pass: A
Order: true
Delivery: mail
Scene Start: 2007-04-06 04:56:57.78
Scene centre: +34°05'11" -106°55'39"



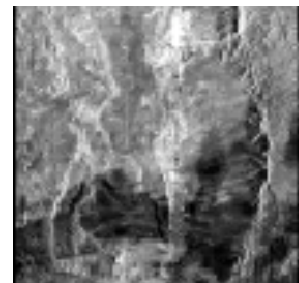
Id: 28
Sensor: ASAR/IM
Status: Archived
Stop: 2007-04-06 04:57:27.96
Track: 48
Swath: I2
Mosaic: false
Medium: DVD
Processing Options: Processing: L0 (ASA_IM__0P),QualityOfService: STANDARD
Scene Type: Floating Scene
Scene Stop: 2007-04-06 04:57:27.95
Selected Frame: 693

Mission: Envisat
Product: ASA_IM
Start: 2007-04-06 04:57:12.87
Orbit: 26655
Frame: 693
Pass: A
Order: true
Delivery: mail
Scene Start: 2007-04-06 04:57:12.87
Scene centre: +34°58'35" -107°09'00"



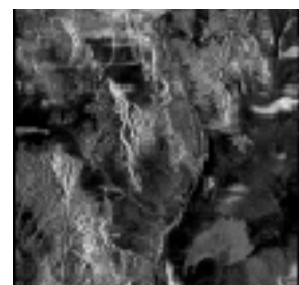
Id: 29
Sensor: ASAR/IM
Status: Archived
Stop: 2007-04-09 17:18:21.18
Track: 98
Swath: I2
Mosaic: false
Medium: DVD
Processing Options: Processing: L0 (ASA_IM__0P),QualityOfService: STANDARD
Scene Type: Floating Scene
Scene Stop: 2007-04-09 17:18:21.17
Selected Frame: 2907

Mission: Envisat
Product: ASA_IM
Start: 2007-04-09 17:18:06.09
Orbit: 26705
Frame: 2907
Pass: D
Order: true
Delivery: mail
Scene Start: 2007-04-09 17:18:06.09
Scene centre: +34°42'51" -106°46'02"



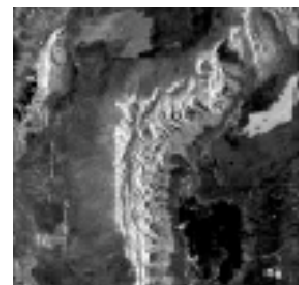
Id: 30
Sensor: ASAR/IM
Status: Archived
Stop: 2007-04-09 17:18:36.27
Track: 98
Swath: I2
Mosaic: false
Medium: DVD
Processing Options: Processing: L0 (ASA_IM__0P),QualityOfService: STANDARD
Scene Type: Floating Scene
Scene Stop: 2007-04-09 17:18:36.26
Selected Frame: 2925

Mission: Envisat
Product: ASA_IM
Start: 2007-04-09 17:18:21.18
Orbit: 26705
Frame: 2925
Pass: D
Order: true
Delivery: mail
Scene Start: 2007-04-09 17:18:21.18
Scene centre: +33°49'09" -106°59'32"



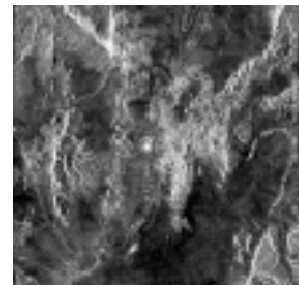
Id: 31
Sensor: ASAR/IM
Status: Archived
Stop: 2007-05-11 04:57:01.95
Track: 48
Swath: I2
Mosaic: false
Medium: DVD
Processing Options: Processing: L0 (ASA_IM__0P),QualityOfService: STANDARD
Scene Type: Floating Scene
Scene Stop: 2007-05-11 04:57:01.94
Selected Frame: 657

Mission: Envisat
Product: ASA_IM
Start: 2007-05-11 04:56:46.86
Orbit: 27156
Frame: 657
Pass: A
Order: true
Delivery: mail
Scene Start: 2007-05-11 04:56:46.86
Scene centre: +33°11'47" -106°42'09"



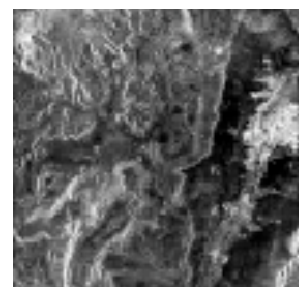
Id: 32
Sensor: ASAR/IM
Status: Archived
Stop: 2007-05-11 04:57:17.04
Track: 48
Swath: I2
Mosaic: false
Medium: DVD
Processing Options: Processing: L0 (ASA_IM__0P),QualityOfService: STANDARD
Scene Type: Floating Scene
Scene Stop: 2007-05-11 04:57:17.03
Selected Frame: 675

Mission: Envisat
Product: ASA_IM
Start: 2007-05-11 04:57:01.95
Orbit: 27156
Frame: 675
Pass: A
Order: true
Delivery: mail
Scene Start: 2007-05-11 04:57:01.95
Scene centre: +34°05'11" -106°55'39"



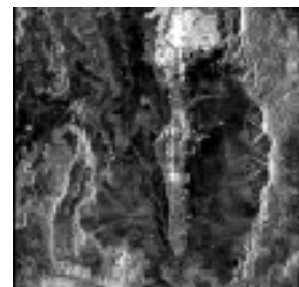
Id: 33
Sensor: ASAR/IM
Status: Archived
Stop: 2007-05-11 04:57:32.13
Track: 48
Swath: I2
Mosaic: false
Medium: DVD
Processing Options: Processing: L0 (ASA_IM__0P),QualityOfService: STANDARD
Scene Type: Floating Scene
Scene Stop: 2007-05-11 04:57:32.12
Selected Frame: 693

Mission: Envisat
Product: ASA_IM
Start: 2007-05-11 04:57:17.04
Orbit: 27156
Frame: 693
Pass: A
Order: true
Delivery: mail
Scene Start: 2007-05-11 04:57:17.04
Scene centre: +34°58'35" -107°09'00"



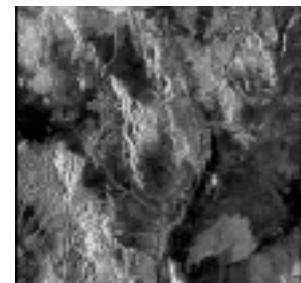
Id: 34
Sensor: ASAR/IM
Status: Archived
Stop: 2007-05-14 17:18:24.64
Track: 98
Swath: I2
Mosaic: false
Medium: DVD
Processing Options: Processing: L0 (ASA_IM__0P),QualityOfService: STANDARD
Scene Type: Floating Scene
Scene Stop: 2007-05-14 17:18:24.63
Selected Frame: 2907

Mission: Envisat
Product: ASA_IM
Start: 2007-05-14 17:18:09.55
Orbit: 27206
Frame: 2907
Pass: D
Order: true
Delivery: mail
Scene Start: 2007-05-14 17:18:09.55
Scene centre: +34°42'51" -106°46'02"



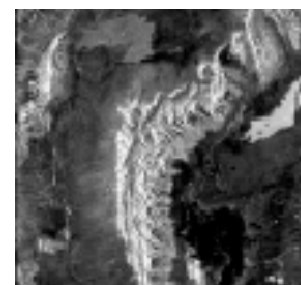
Id: 35
Sensor: ASAR/IM
Status: Archived
Stop: 2007-05-14 17:18:39.73
Track: 98
Swath: I2
Mosaic: false
Medium: DVD
Processing Options: Processing: L0 (ASA_IM__0P),QualityOfService: STANDARD
Scene Type: Floating Scene
Scene Stop: 2007-05-14 17:18:39.72
Selected Frame: 2925

Mission: Envisat
Product: ASA_IM
Start: 2007-05-14 17:18:24.64
Orbit: 27206
Frame: 2925
Pass: D
Order: true
Delivery: mail



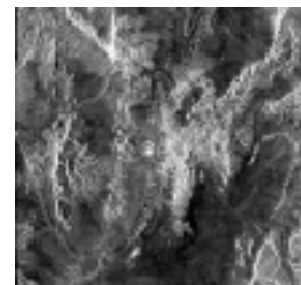
Id: 36
Sensor: ASAR/IM
Status: Archived
Stop: 2007-06-15 04:57:03.70
Track: 48
Swath: I2
Mosaic: false
Medium: DVD
Processing Options: Processing: L0 (ASA_IM__0P),QualityOfService: STANDARD
Scene Type: Floating Scene
Scene Stop: 2007-06-15 04:57:03.69
Selected Frame: 657

Mission: Envisat
Product: ASA_IM
Start: 2007-06-15 04:56:48.61
Orbit: 27657
Frame: 657
Pass: A
Order: true
Delivery: mail



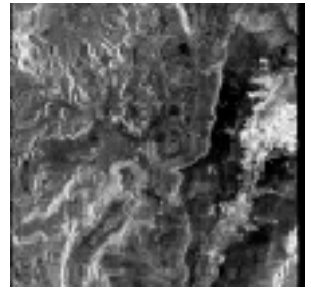
Id: 37
Sensor: ASAR/IM
Status: Archived
Stop: 2007-06-15 04:57:18.79
Track: 48
Swath: I2
Mosaic: false
Medium: DVD
Processing Options: Processing: L0 (ASA_IM__0P),QualityOfService: STANDARD
Scene Type: Floating Scene
Scene Stop: 2007-06-15 04:57:18.78
Selected Frame: 675

Mission: Envisat
Product: ASA_IM
Start: 2007-06-15 04:57:03.70
Orbit: 27657
Frame: 675
Pass: A
Order: true
Delivery: mail



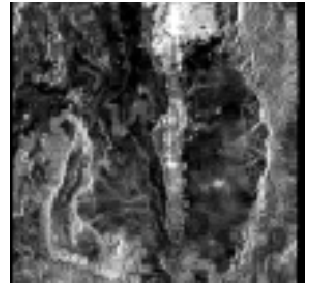
Id: 38
Sensor: ASAR/IM
Status: Archived
Stop: 2007-06-15 04:57:33.88
Track: 48
Swath: I2
Mosaic: false
Medium: DVD
Processing Options: Processing: L0 (ASA_IM__0P),QualityOfService: STANDARD
Scene Type: Floating Scene
Scene Stop: 2007-06-15 04:57:33.87
Selected Frame: 693

Mission: Envisat
Product: ASA_IM
Start: 2007-06-15 04:57:18.79
Orbit: 27657
Frame: 693
Pass: A
Order: true
Delivery: mail
Scene Start: 2007-06-15 04:57:18.79
Scene centre: +34°58'35" -107°09'00"



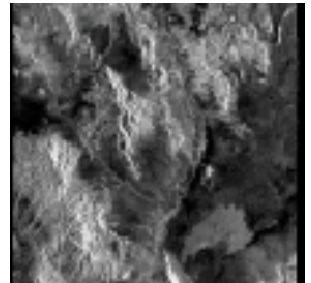
Id: 39
Sensor: ASAR/IM
Status: Archived
Stop: 2007-06-18 17:18:26.63
Track: 98
Swath: I2
Mosaic: false
Medium: DVD
Processing Options: Processing: L0 (ASA_IM__0P),QualityOfService: STANDARD
Scene Type: Floating Scene
Scene Stop: 2007-06-18 17:18:26.62
Selected Frame: 2907

Mission: Envisat
Product: ASA_IM
Start: 2007-06-18 17:18:11.54
Orbit: 27707
Frame: 2907
Pass: D
Order: true
Delivery: mail
Scene Start: 2007-06-18 17:18:11.54
Scene centre: +34°42'51" -106°46'02"



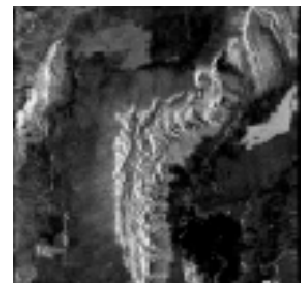
Id: 40
Sensor: ASAR/IM
Status: Archived
Stop: 2007-06-18 17:18:41.72
Track: 98
Swath: I2
Mosaic: false
Medium: DVD
Processing Options: Processing: L0 (ASA_IM__0P),QualityOfService: STANDARD
Scene Type: Floating Scene
Scene Stop: 2007-06-18 17:18:41.71
Selected Frame: 2925

Mission: Envisat
Product: ASA_IM
Start: 2007-06-18 17:18:26.63
Orbit: 27707
Frame: 2925
Pass: D
Order: true
Delivery: mail
Scene Start: 2007-06-18 17:18:26.63
Scene centre: +33°49'09" -106°59'32"



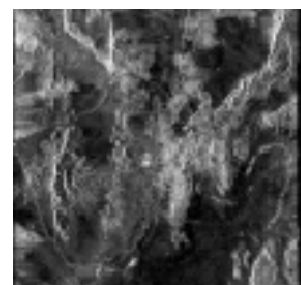
Id: 41
Sensor: ASAR/IM
Status: Archived
Stop: 2007-07-20 04:57:04.47
Track: 48
Swath: I2
Mosaic: false
Medium: DVD
Processing Options: Processing: L0 (ASA_IM__0P),QualityOfService: STANDARD
Scene Type: Floating Scene
Scene Stop: 2007-07-20 04:57:04.46
Selected Frame: 657

Mission: Envisat
Product: ASA_IM
Start: 2007-07-20 04:56:49.38
Orbit: 28158
Frame: 657
Pass: A
Order: true
Delivery: mail
Scene Start: 2007-07-20 04:56:49.38
Scene centre: +33°11'47" -106°42'09"



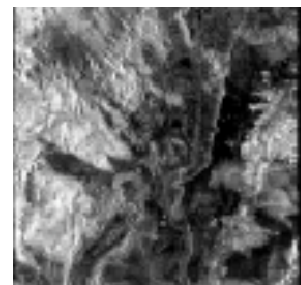
Id: 42
Sensor: ASAR/IM
Status: Archived
Stop: 2007-07-20 04:57:19.56
Track: 48
Swath: I2
Mosaic: false
Medium: DVD
Processing Options: Processing: L0 (ASA_IM__0P),QualityOfService: STANDARD
Scene Type: Floating Scene
Scene Stop: 2007-07-20 04:57:19.55
Selected Frame: 675

Mission: Envisat
Product: ASA_IM
Start: 2007-07-20 04:57:04.47
Orbit: 28158
Frame: 675
Pass: A
Order: true
Delivery: mail
Scene Start: 2007-07-20 04:57:04.47
Scene centre: +34°05'11" -106°55'39"



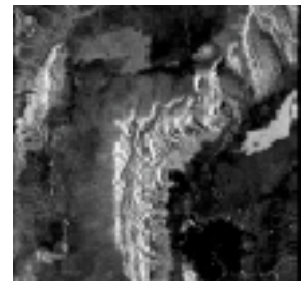
Id: 43
Sensor: ASAR/IM
Status: Archived
Stop: 2007-07-20 04:57:34.65
Track: 48
Swath: I2
Mosaic: false
Medium: DVD
Processing Options: Processing: L0 (ASA_IM__0P),QualityOfService: STANDARD
Scene Type: Floating Scene
Scene Stop: 2007-07-20 04:57:34.64
Selected Frame: 693

Mission: Envisat
Product: ASA_IM
Start: 2007-07-20 04:57:19.56
Orbit: 28158
Frame: 693
Pass: A
Order: true
Delivery: mail
Scene Start: 2007-07-20 04:57:19.56
Scene centre: +34°58'35" -107°09'00"



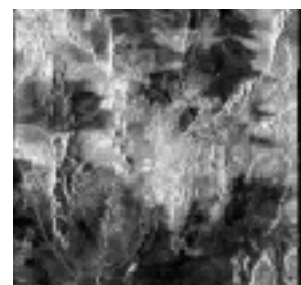
Id: 44
Sensor: ASAR/IM
Status: Archived
Stop: 2007-08-24 04:57:03.85
Track: 48
Swath: I2
Mosaic: false
Medium: DVD
Processing Options: Processing: L0 (ASA_IM__0P),QualityOfService: STANDARD
Scene Type: Floating Scene
Scene Stop: 2007-08-24 04:57:03.84
Selected Frame: 657

Mission: Envisat
Product: ASA_IM
Start: 2007-08-24 04:56:48.76
Orbit: 28659
Frame: 657
Pass: A
Order: true
Delivery: mail
Scene Start: 2007-08-24 04:56:48.76
Scene centre: +33°11'47" -106°42'09"



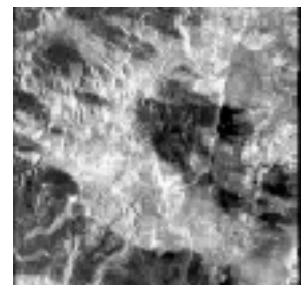
Id: 45
Sensor: ASAR/IM
Status: Archived
Stop: 2007-08-24 04:57:18.94
Track: 48
Swath: I2
Mosaic: false
Medium: DVD
Processing Options: Processing: L0 (ASA_IM__0P),QualityOfService: STANDARD
Scene Type: Floating Scene
Scene Stop: 2007-08-24 04:57:18.93
Selected Frame: 675

Mission: Envisat
Product: ASA_IM
Start: 2007-08-24 04:57:03.85
Orbit: 28659
Frame: 675
Pass: A
Order: true
Delivery: mail
Scene Start: 2007-08-24 04:57:03.85
Scene centre: +34°05'11" -106°55'39"



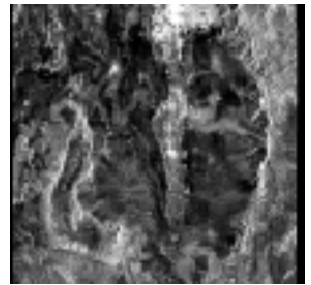
Id: 46
Sensor: ASAR/IM
Status: Archived
Stop: 2007-08-24 04:57:34.03
Track: 48
Swath: I2
Mosaic: false
Medium: DVD
Processing Options: Processing: L0 (ASA_IM__0P),QualityOfService: STANDARD
Scene Type: Floating Scene
Scene Stop: 2007-08-24 04:57:34.02
Selected Frame: 693

Mission: Envisat
Product: ASA_IM
Start: 2007-08-24 04:57:18.94
Orbit: 28659
Frame: 693
Pass: A
Order: true
Delivery: mail
Scene Start: 2007-08-24 04:57:18.94
Scene centre: +34°58'35" -107°09'00"



Id: 47
Sensor: ASAR/IM
Status: Archived
Stop: 2007-08-27 17:18:26.25
Track: 98
Swath: I2
Mosaic: false
Medium: DVD
Processing Options: Processing: L0 (ASA_IM_0P),QualityOfService: STANDARD
Scene Type: Floating Scene
Scene Stop: 2007-08-27 17:18:26.24
Selected Frame: 2907

Mission: Envisat
Product: ASA_IM
Start: 2007-08-27 17:18:11.16
Orbit: 28709
Frame: 2907
Pass: D
Order: true
Delivery: mail
Scene Start: 2007-08-27 17:18:11.16
Scene centre: +34°42'51" -106°46'02"



Id: 48
Sensor: ASAR/IM
Status: Archived
Stop: 2007-08-27 17:18:41.34
Track: 98
Swath: I2
Mosaic: false
Medium: DVD
Processing Options: Processing: L0 (ASA_IM_0P),QualityOfService: STANDARD
Scene Type: Floating Scene
Scene Stop: 2007-08-27 17:18:41.33
Selected Frame: 2925

Mission: Envisat
Product: ASA_IM
Start: 2007-08-27 17:18:26.25
Orbit: 28709
Frame: 2925
Pass: D
Order: true
Delivery: mail
Scene Start: 2007-08-27 17:18:26.25
Scene centre: +33°49'09" -106°59'32"

