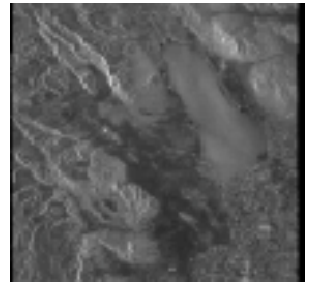


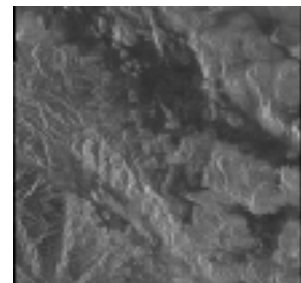
Id: 1
Sensor: ASAR/IM
Status: Archived
Stop: 2004-05-23 05:34:30.44
Track: 77
Swath: I2
Mosaic: false
Medium: DVD
Processing Options: Processing: L0 (ASA_IM_0P),QualityOfService: STANDARD
Scene Type: Floating Scene
Scene Stop: 2004-05-23 05:34:30.43
Selected Frame: 657

Mission: Envisat
Product: ASA_IM
Start: 2004-05-23 05:34:15.35
Orbit: 11654
Frame: 657
Pass: A
Order: true
Delivery: mail



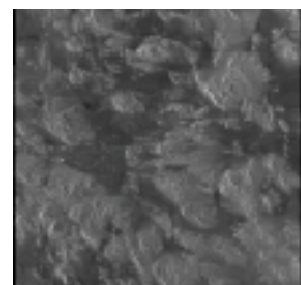
Id: 2
Sensor: ASAR/IM
Status: Archived
Stop: 2004-05-23 05:34:45.53
Track: 77
Swath: I2
Mosaic: false
Medium: DVD
Processing Options: Processing: L0 (ASA_IM__0P),QualityOfService: STANDARD
Scene Type: Floating Scene
Scene Stop: 2004-05-23 05:34:45.52 Scene centre: +34°05'11" -116°16'03"
Selected Frame: 675

Mission: Envisat
Product: ASA_IM
Start: 2004-05-23 05:34:30.44
Orbit: 11654
Frame: 675
Pass: A
Order: true
Delivery: mail



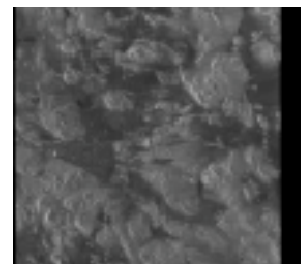
Id: 3
Sensor: ASAR/IM
Status: Archived
Stop: 2004-05-23 05:35:00.62
Track: 77
Swath: I2
Mosaic: false
Medium: DVD
Processing Options: Processing: L0 (ASA_IM__0P),QualityOfService: STANDARD
Scene Type: Floating Scene
Scene Stop: 2004-05-23 05:35:00.61 Scene centre: +34°58'35" -116°29'24"
Selected Frame: 693

Mission: Envisat
Product: ASA_IM
Start: 2004-05-23 05:34:45.53
Orbit: 11654
Frame: 693
Pass: A
Order: true
Delivery: mail



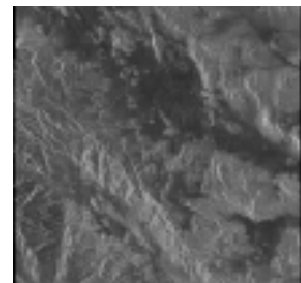
Id: 4
Sensor: ASAR/IM
Status: Archived
Stop: 2004-06-27 05:35:00.66
Track: 77
Swath: I2
Mosaic: false
Medium: DVD
Processing Options: Processing: L0 (ASA_IM__0P),QualityOfService: STANDARD
Scene Type: Floating Scene
Scene Stop: 2004-06-27 05:35:00.65 Scene centre: +34°58'35" -116°29'24"
Selected Frame: 693

Mission: Envisat
Product: ASA_IM
Start: 2004-06-27 05:34:45.57
Orbit: 12155
Frame: 693
Pass: A
Order: true
Delivery: mail



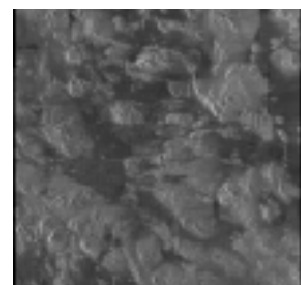
Id: 5
Sensor: ASAR/IM
Status: Archived
Stop: 2004-08-01 05:34:47.91
Track: 77
Swath: I2
Mosaic: false
Medium: DVD
Processing Options: Processing: L0 (ASA_IM__0P),QualityOfService: STANDARD
Scene Type: Floating Scene
Scene Stop: 2004-08-01 05:34:47.90 Scene centre: +34°05'11" -116°16'03"
Selected Frame: 675

Mission: Envisat
Product: ASA_IM
Start: 2004-08-01 05:34:32.82
Orbit: 12656
Frame: 675
Pass: A
Order: true
Delivery: mail



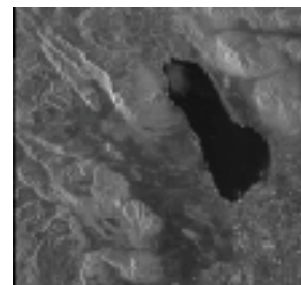
Id: 6
Sensor: ASAR/IM
Status: Archived
Stop: 2004-08-01 05:35:03.00
Track: 77
Swath: I2
Mosaic: false
Medium: DVD
Processing Options: Processing: L0 (ASA_IM__0P),QualityOfService: STANDARD
Scene Type: Floating Scene
Scene Stop: 2004-08-01 05:35:02.99 Scene centre: +34°58'35" -116°29'24"
Selected Frame: 693

Mission: Envisat
Product: ASA_IM
Start: 2004-08-01 05:34:47.91
Orbit: 12656
Frame: 693
Pass: A
Order: true
Delivery: mail



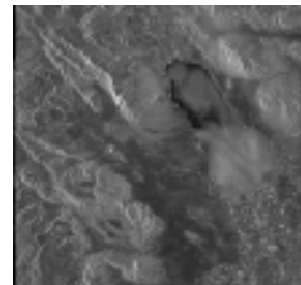
Id: 7
Sensor: ASAR/IM
Status: Archived
Stop: 2004-09-05 05:34:31.12
Track: 77
Swath: I2
Mosaic: false
Medium: DVD
Processing Options: Processing: L0 (ASA_IM__0P),QualityOfService: STANDARD
Scene Type: Floating Scene
Scene Stop: 2004-09-05 05:34:31.11 Scene centre: +33°11'47" -116°02'33"
Selected Frame: 657

Mission: Envisat
Product: ASA_IM
Start: 2004-09-05 05:34:16.03
Orbit: 13157
Frame: 657
Pass: A
Order: true
Delivery: mail



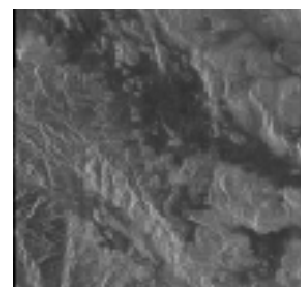
Id: 8
Sensor: ASAR/IM
Status: Archived
Stop: 2004-10-10 05:34:31.39
Track: 77
Swath: I2
Mosaic: false
Medium: DVD
Processing Options: Processing: L0 (ASA_IM__0P),QualityOfService: STANDARD
Scene Type: Floating Scene
Scene Stop: 2004-10-10 05:34:31.38 Scene centre: +33°11'47" -116°02'33"
Selected Frame: 657

Mission: Envisat
Product: ASA_IM
Start: 2004-10-10 05:34:16.30
Orbit: 13658
Frame: 657
Pass: A
Order: true
Delivery: mail



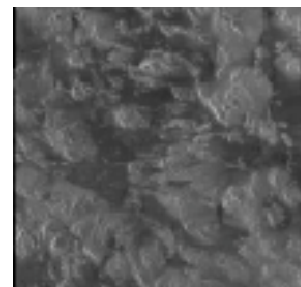
Id: 9
Sensor: ASAR/IM
Status: Archived
Stop: 2004-10-10 05:34:46.48
Track: 77
Swath: I2
Mosaic: false
Medium: DVD
Processing Options: Processing: L0 (ASA_IM__0P),QualityOfService: STANDARD
Scene Type: Floating Scene
Scene Stop: 2004-10-10 05:34:46.47 Scene centre: +34°05'11" -116°16'03"
Selected Frame: 675

Mission: Envisat
Product: ASA_IM
Start: 2004-10-10 05:34:31.39
Orbit: 13658
Frame: 675
Pass: A
Order: true
Delivery: mail



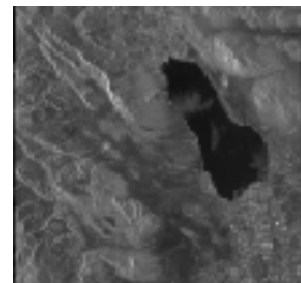
Id: 10
Sensor: ASAR/IM
Status: Archived
Stop: 2004-10-10 05:35:01.57
Track: 77
Swath: I2
Mosaic: false
Medium: DVD
Processing Options: Processing: L0 (ASA_IM__0P),QualityOfService: STANDARD
Scene Type: Floating Scene
Scene Stop: 2004-10-10 05:35:01.56 Scene centre: +34°58'35" -116°29'24"
Selected Frame: 693

Mission: Envisat
Product: ASA_IM
Start: 2004-10-10 05:34:46.48
Orbit: 13658
Frame: 693
Pass: A
Order: true
Delivery: mail



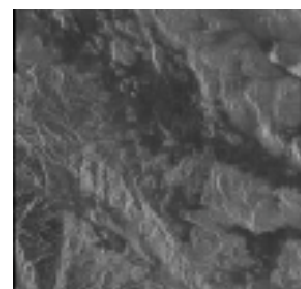
Id: 11
Sensor: ASAR/IM
Status: Archived
Stop: 2004-11-14 05:34:29.26
Track: 77
Swath: I2
Mosaic: false
Medium: DVD
Processing Options: Processing: L0 (ASA_IM__0P),QualityOfService: STANDARD
Scene Type: Floating Scene
Scene Stop: 2004-11-14 05:34:29.25
Selected Frame: 657

Mission: Envisat
Product: ASA_IM
Start: 2004-11-14 05:34:14.17
Orbit: 14159
Frame: 657
Pass: A
Order: true
Delivery: mail
Scene Start: 2004-11-14 05:34:14.17
Scene centre: +33°11'47" -116°02'33"



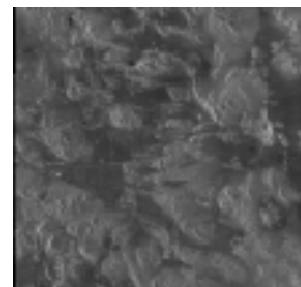
Id: 12
Sensor: ASAR/IM
Status: Archived
Stop: 2004-11-14 05:34:44.35
Track: 77
Swath: I2
Mosaic: false
Medium: DVD
Processing Options: Processing: L0 (ASA_IM__0P),QualityOfService: STANDARD
Scene Type: Floating Scene
Scene Stop: 2004-11-14 05:34:44.34
Selected Frame: 675

Mission: Envisat
Product: ASA_IM
Start: 2004-11-14 05:34:29.26
Orbit: 14159
Frame: 675
Pass: A
Order: true
Delivery: mail
Scene Start: 2004-11-14 05:34:29.26
Scene centre: +34°05'11" -116°16'03"



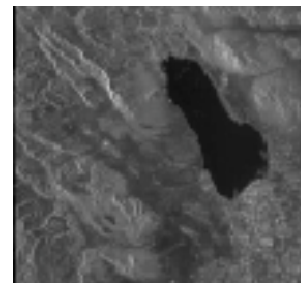
Id: 13
Sensor: ASAR/IM
Status: Archived
Stop: 2004-11-14 05:34:59.44
Track: 77
Swath: I2
Mosaic: false
Medium: DVD
Processing Options: Processing: L0 (ASA_IM__0P),QualityOfService: STANDARD
Scene Type: Floating Scene
Scene Stop: 2004-11-14 05:34:59.43
Selected Frame: 693

Mission: Envisat
Product: ASA_IM
Start: 2004-11-14 05:34:44.35
Orbit: 14159
Frame: 693
Pass: A
Order: true
Delivery: mail
Scene Start: 2004-11-14 05:34:44.35
Scene centre: +34°58'35" -116°29'24"



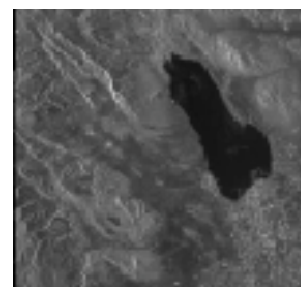
Id: 14
Sensor: ASAR/IM
Status: Archived
Stop: 2004-12-19 05:34:26.04
Track: 77
Swath: I2
Mosaic: false
Medium: DVD
Processing Options: Processing: L0 (ASA_IM__0P),QualityOfService: STANDARD
Scene Type: Floating Scene
Scene Stop: 2004-12-19 05:34:26.03
Selected Frame: 657

Mission: Envisat
Product: ASA_IM
Start: 2004-12-19 05:34:10.95
Orbit: 14660
Frame: 657
Pass: A
Order: true
Delivery: mail
Scene Start: 2004-12-19 05:34:10.95
Scene centre: +33°11'47" -116°02'33"



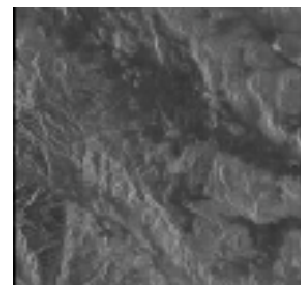
Id: 15
Sensor: ASAR/IM
Status: Archived
Stop: 2005-01-23 05:34:27.17
Track: 77
Swath: I2
Mosaic: false
Medium: DVD
Processing Options: Processing: L0 (ASA_IM__0P),QualityOfService: STANDARD
Scene Type: Floating Scene
Scene Stop: 2005-01-23 05:34:27.16
Selected Frame: 657

Mission: Envisat
Product: ASA_IM
Start: 2005-01-23 05:34:12.08
Orbit: 15161
Frame: 657
Pass: A
Order: true
Delivery: mail
Scene Start: 2005-01-23 05:34:12.08
Scene centre: +33°11'47" -116°02'33"



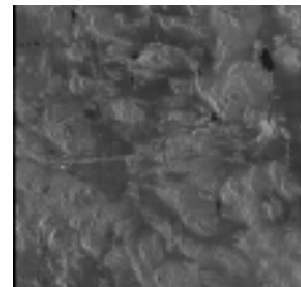
Id: 16
Sensor: ASAR/IM
Status: Archived
Stop: 2005-01-23 05:34:42.26
Track: 77
Swath: I2
Mosaic: false
Medium: DVD
Processing Options: Processing: L0 (ASA_IM__0P),QualityOfService: STANDARD
Scene Type: Floating Scene
Scene Stop: 2005-01-23 05:34:42.25
Selected Frame: 675

Mission: Envisat
Product: ASA_IM
Start: 2005-01-23 05:34:27.17
Orbit: 15161
Frame: 675
Pass: A
Order: true
Delivery: mail
Scene Start: 2005-01-23 05:34:27.17
Scene centre: +34°05'11" -116°16'03"



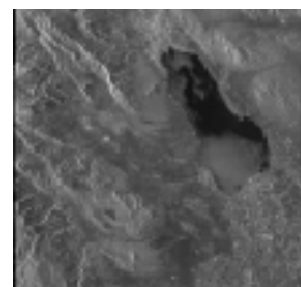
Id: 17
Sensor: ASAR/IM
Status: Archived
Stop: 2005-01-23 05:34:57.35
Track: 77
Swath: I2
Mosaic: false
Medium: DVD
Processing Options: Processing: L0 (ASA_IM__0P),QualityOfService: STANDARD
Scene Type: Floating Scene
Scene Stop: 2005-01-23 05:34:57.34 Scene centre: +34°58'35" -116°29'24"
Selected Frame: 693

Mission: Envisat
Product: ASA_IM
Start: 2005-01-23 05:34:42.26
Orbit: 15161
Frame: 693
Pass: A
Order: true
Delivery: mail



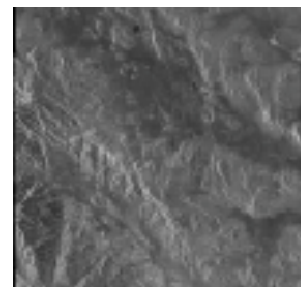
Id: 18
Sensor: ASAR/IM
Status: Archived
Stop: 2005-02-27 05:34:26.40
Track: 77
Swath: I2
Mosaic: false
Medium: DVD
Processing Options: Processing: L0 (ASA_IM__0P),QualityOfService: STANDARD
Scene Type: Floating Scene
Scene Stop: 2005-02-27 05:34:26.39 Scene centre: +33°11'47" -116°02'33"
Selected Frame: 657

Mission: Envisat
Product: ASA_IM
Start: 2005-02-27 05:34:11.31
Orbit: 15662
Frame: 657
Pass: A
Order: true
Delivery: mail



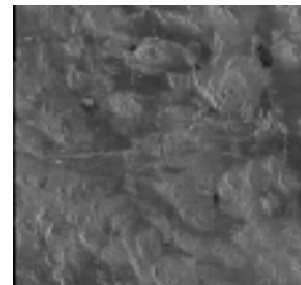
Id: 19
Sensor: ASAR/IM
Status: Archived
Stop: 2005-02-27 05:34:41.49
Track: 77
Swath: I2
Mosaic: false
Medium: DVD
Processing Options: Processing: L0 (ASA_IM__0P),QualityOfService: STANDARD
Scene Type: Floating Scene
Scene Stop: 2005-02-27 05:34:41.48 Scene centre: +34°05'11" -116°16'03"
Selected Frame: 675

Mission: Envisat
Product: ASA_IM
Start: 2005-02-27 05:34:26.40
Orbit: 15662
Frame: 675
Pass: A
Order: true
Delivery: mail



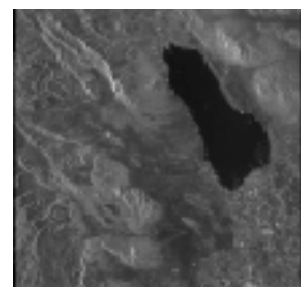
Id: 20
Sensor: ASAR/IM
Status: Archived
Stop: 2005-02-27 05:34:56.58
Track: 77
Swath: I2
Mosaic: false
Medium: DVD
Processing Options: Processing: L0 (ASA_IM__0P),QualityOfService: STANDARD
Scene Type: Floating Scene
Scene Stop: 2005-02-27 05:34:56.57
Selected Frame: 693

Mission: Envisat
Product: ASA_IM
Start: 2005-02-27 05:34:41.49
Orbit: 15662
Frame: 693
Pass: A
Order: true
Delivery: mail
Scene Start: 2005-02-27 05:34:41.49
Scene centre: +34°58'35" -116°29'24"



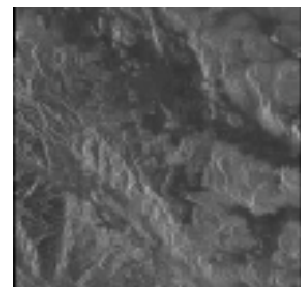
Id: 21
Sensor: ASAR/IM
Status: Archived
Stop: 2005-04-03 05:34:27.87
Track: 77
Swath: I2
Mosaic: false
Medium: DVD
Processing Options: Processing: L0 (ASA_IM__0P),QualityOfService: STANDARD
Scene Type: Floating Scene
Scene Stop: 2005-04-03 05:34:27.86
Selected Frame: 657

Mission: Envisat
Product: ASA_IM
Start: 2005-04-03 05:34:12.78
Orbit: 16163
Frame: 657
Pass: A
Order: true
Delivery: mail
Scene Start: 2005-04-03 05:34:12.78
Scene centre: +33°11'47" -116°02'33"



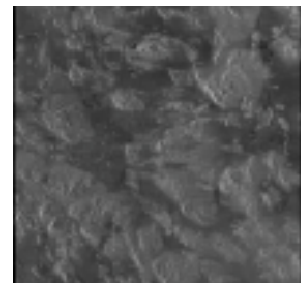
Id: 22
Sensor: ASAR/IM
Status: Archived
Stop: 2005-04-03 05:34:42.96
Track: 77
Swath: I2
Mosaic: false
Medium: DVD
Processing Options: Processing: L0 (ASA_IM__0P),QualityOfService: STANDARD
Scene Type: Floating Scene
Scene Stop: 2005-04-03 05:34:42.95
Selected Frame: 675

Mission: Envisat
Product: ASA_IM
Start: 2005-04-03 05:34:27.87
Orbit: 16163
Frame: 675
Pass: A
Order: true
Delivery: mail
Scene Start: 2005-04-03 05:34:27.87
Scene centre: +34°05'11" -116°16'03"



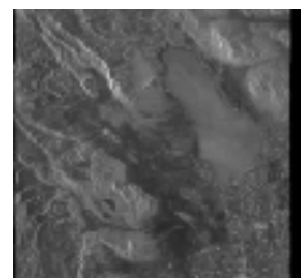
Id: 23
Sensor: ASAR/IM
Status: Archived
Stop: 2005-04-03 05:34:58.05
Track: 77
Swath: I2
Mosaic: false
Medium: DVD
Processing Options: Processing: L0 (ASA_IM__0P),QualityOfService: STANDARD
Scene Type: Floating Scene
Scene Stop: 2005-04-03 05:34:58.04 Scene centre: +34°58'35" -116°29'24"
Selected Frame: 693

Mission: Envisat
Product: ASA_IM
Start: 2005-04-03 05:34:42.96
Orbit: 16163
Frame: 693
Pass: A
Order: true
Delivery: mail



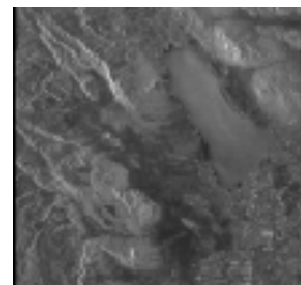
Id: 24
Sensor: ASAR/IM
Status: Archived
Stop: 2005-05-08 05:34:33.97
Track: 77
Swath: I2
Mosaic: false
Medium: DVD
Processing Options: Processing: L0 (ASA_IM__0P),QualityOfService: STANDARD
Scene Type: Floating Scene
Scene Stop: 2005-05-08 05:34:33.96 Scene centre: +33°11'47" -116°02'33"
Selected Frame: 657

Mission: Envisat
Product: ASA_IM
Start: 2005-05-08 05:34:18.88
Orbit: 16664
Frame: 657
Pass: A
Order: true
Delivery: mail



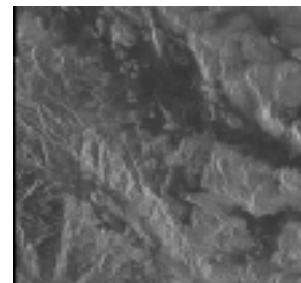
Id: 25
Sensor: ASAR/IM
Status: Archived
Stop: 2005-06-12 05:34:32.60
Track: 77
Swath: I2
Mosaic: false
Medium: DVD
Processing Options: Processing: L0 (ASA_IM__0P),QualityOfService: STANDARD
Scene Type: Floating Scene
Scene Stop: 2005-06-12 05:34:32.59 Scene centre: +33°11'47" -116°02'33"
Selected Frame: 657

Mission: Envisat
Product: ASA_IM
Start: 2005-06-12 05:34:17.51
Orbit: 17165
Frame: 657
Pass: A
Order: true
Delivery: mail



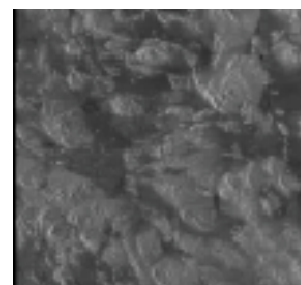
Id: 26
Sensor: ASAR/IM
Status: Archived
Stop: 2005-06-12 05:34:47.69
Track: 77
Swath: I2
Mosaic: false
Medium: DVD
Processing Options: Processing: L0 (ASA_IM__0P),QualityOfService: STANDARD
Scene Type: Floating Scene
Scene Stop: 2005-06-12 05:34:47.68
Selected Frame: 675

Mission: Envisat
Product: ASA_IM
Start: 2005-06-12 05:34:32.60
Orbit: 17165
Frame: 675
Pass: A
Order: true
Delivery: mail
Scene Start: 2005-06-12 05:34:32.60
Scene centre: +34°05'11" -116°16'03"



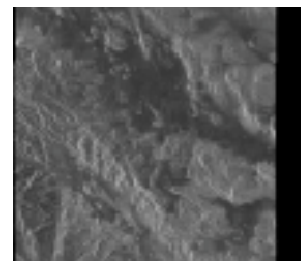
Id: 27
Sensor: ASAR/IM
Status: Archived
Stop: 2005-06-12 05:35:02.78
Track: 77
Swath: I2
Mosaic: false
Medium: DVD
Processing Options: Processing: L0 (ASA_IM__0P),QualityOfService: STANDARD
Scene Type: Floating Scene
Scene Stop: 2005-06-12 05:35:02.77
Selected Frame: 693

Mission: Envisat
Product: ASA_IM
Start: 2005-06-12 05:34:47.69
Orbit: 17165
Frame: 693
Pass: A
Order: true
Delivery: mail
Scene Start: 2005-06-12 05:34:47.69
Scene centre: +34°58'35" -116°29'24"



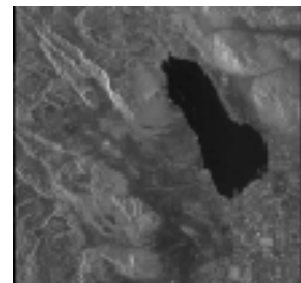
Id: 28
Sensor: ASAR/IM
Status: Archived
Stop: 2005-07-17 05:34:49.53
Track: 77
Swath: I2
Mosaic: false
Medium: DVD
Processing Options: Processing: L0 (ASA_IM__0P),QualityOfService: STANDARD
Scene Type: Floating Scene
Scene Stop: 2005-07-17 05:34:49.52
Selected Frame: 675

Mission: Envisat
Product: ASA_IM
Start: 2005-07-17 05:34:34.44
Orbit: 17666
Frame: 675
Pass: A
Order: true
Delivery: mail
Scene Start: 2005-07-17 05:34:34.44
Scene centre: +34°05'11" -116°16'03"



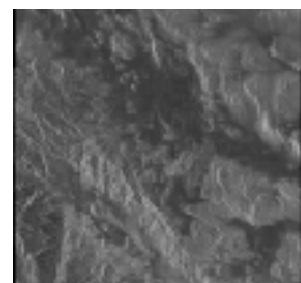
Id: 29
Sensor: ASAR/IM
Status: Archived
Stop: 2005-08-21 05:34:29.96
Track: 77
Swath: I2
Mosaic: false
Medium: DVD
Processing Options: Processing: L0 (ASA_IM__0P),QualityOfService: STANDARD
Scene Type: Floating Scene
Scene Stop: 2005-08-21 05:34:29.95
Selected Frame: 657

Mission: Envisat
Product: ASA_IM
Start: 2005-08-21 05:34:14.87
Orbit: 18167
Frame: 657
Pass: A
Order: true
Delivery: mail
Scene Start: 2005-08-21 05:34:14.87
Scene centre: +33°11'47" -116°02'33"



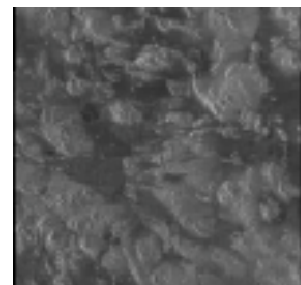
Id: 30
Sensor: ASAR/IM
Status: Archived
Stop: 2005-08-21 05:34:45.05
Track: 77
Swath: I2
Mosaic: false
Medium: DVD
Processing Options: Processing: L0 (ASA_IM__0P),QualityOfService: STANDARD
Scene Type: Floating Scene
Scene Stop: 2005-08-21 05:34:45.04
Selected Frame: 675

Mission: Envisat
Product: ASA_IM
Start: 2005-08-21 05:34:29.96
Orbit: 18167
Frame: 675
Pass: A
Order: true
Delivery: mail
Scene Start: 2005-08-21 05:34:29.96
Scene centre: +34°05'11" -116°16'03"



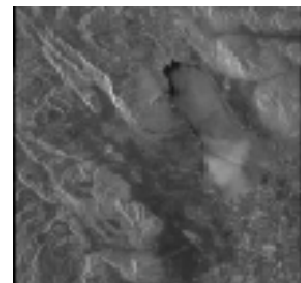
Id: 31
Sensor: ASAR/IM
Status: Archived
Stop: 2005-08-21 05:35:00.14
Track: 77
Swath: I2
Mosaic: false
Medium: DVD
Processing Options: Processing: L0 (ASA_IM__0P),QualityOfService: STANDARD
Scene Type: Floating Scene
Scene Stop: 2005-08-21 05:35:00.13
Selected Frame: 693

Mission: Envisat
Product: ASA_IM
Start: 2005-08-21 05:34:45.05
Orbit: 18167
Frame: 693
Pass: A
Order: true
Delivery: mail
Scene Start: 2005-08-21 05:34:45.05
Scene centre: +34°58'35" -116°29'24"



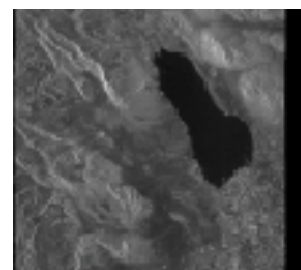
Id: 32
Sensor: ASAR/IM
Status: Archived
Stop: 2005-09-25 05:34:30.10
Track: 77
Swath: I2
Mosaic: false
Medium: DVD
Processing Options: Processing: L0 (ASA_IM__0P),QualityOfService: STANDARD
Scene Type: Floating Scene
Scene Stop: 2005-09-25 05:34:30.09 Scene centre: +33°11'47" -116°02'33"
Selected Frame: 657

Mission: Envisat
Product: ASA_IM
Start: 2005-09-25 05:34:15.01
Orbit: 18668
Frame: 657
Pass: A
Order: true
Delivery: mail



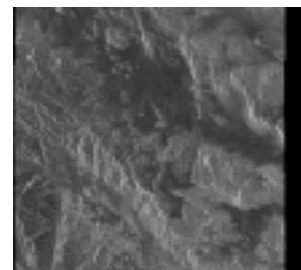
Id: 33
Sensor: ASAR/IM
Status: Archived
Stop: 2006-02-12 05:34:19.93
Track: 77
Swath: I2
Mosaic: false
Medium: DVD
Processing Options: Processing: L0 (ASA_IM__0P),QualityOfService: STANDARD
Scene Type: Floating Scene
Scene Stop: 2006-02-12 05:34:19.92 Scene centre: +33°11'47" -116°02'33"
Selected Frame: 657

Mission: Envisat
Product: ASA_IM
Start: 2006-02-12 05:34:04.84
Orbit: 20672
Frame: 657
Pass: A
Order: true
Delivery: mail



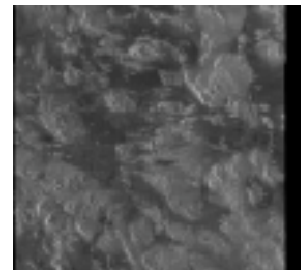
Id: 34
Sensor: ASAR/IM
Status: Archived
Stop: 2006-02-12 05:34:35.02
Track: 77
Swath: I2
Mosaic: false
Medium: DVD
Processing Options: Processing: L0 (ASA_IM__0P),QualityOfService: STANDARD
Scene Type: Floating Scene
Scene Stop: 2006-02-12 05:34:35.01 Scene centre: +34°05'11" -116°16'03"
Selected Frame: 675

Mission: Envisat
Product: ASA_IM
Start: 2006-02-12 05:34:19.93
Orbit: 20672
Frame: 675
Pass: A
Order: true
Delivery: mail



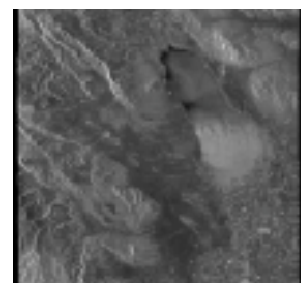
Id: 35
Sensor: ASAR/IM
Status: Archived
Stop: 2006-02-12 05:34:50.11
Track: 77
Swath: I2
Mosaic: false
Medium: DVD
Processing Options: Processing: L0 (ASA_IM__0P),QualityOfService: STANDARD
Scene Type: Floating Scene
Scene Stop: 2006-02-12 05:34:50.10 Scene centre: +34°58'35" -116°29'24"
Selected Frame: 693

Mission: Envisat
Product: ASA_IM
Start: 2006-02-12 05:34:35.02
Orbit: 20672
Frame: 693
Pass: A
Order: true
Delivery: mail



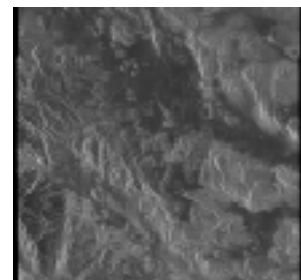
Id: 36
Sensor: ASAR/IM
Status: Archived
Stop: 2006-03-19 05:34:17.49
Track: 77
Swath: I2
Mosaic: false
Medium: DVD
Processing Options: Processing: L0 (ASA_IM__0P),QualityOfService: STANDARD
Scene Type: Floating Scene
Scene Stop: 2006-03-19 05:34:17.48 Scene centre: +33°11'47" -116°02'33"
Selected Frame: 657

Mission: Envisat
Product: ASA_IM
Start: 2006-03-19 05:34:02.40
Orbit: 21173
Frame: 657
Pass: A
Order: true
Delivery: mail



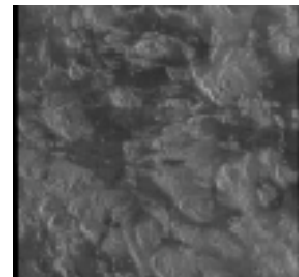
Id: 37
Sensor: ASAR/IM
Status: Archived
Stop: 2006-03-19 05:34:32.58
Track: 77
Swath: I2
Mosaic: false
Medium: DVD
Processing Options: Processing: L0 (ASA_IM__0P),QualityOfService: STANDARD
Scene Type: Floating Scene
Scene Stop: 2006-03-19 05:34:32.57 Scene centre: +34°05'11" -116°16'03"
Selected Frame: 675

Mission: Envisat
Product: ASA_IM
Start: 2006-03-19 05:34:17.49
Orbit: 21173
Frame: 675
Pass: A
Order: true
Delivery: mail



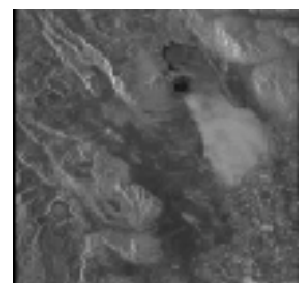
Id: 38
Sensor: ASAR/IM
Status: Archived
Stop: 2006-03-19 05:34:47.67
Track: 77
Swath: I2
Mosaic: false
Medium: DVD
Processing Options: Processing: L0 (ASA_IM__0P),QualityOfService: STANDARD
Scene Type: Floating Scene
Scene Stop: 2006-03-19 05:34:47.66 Scene centre: +34°58'35" -116°29'24"
Selected Frame: 693

Mission: Envisat
Product: ASA_IM
Start: 2006-03-19 05:34:32.58
Orbit: 21173
Frame: 693
Pass: A
Order: true
Delivery: mail



Id: 39
Sensor: ASAR/IM
Status: Archived
Stop: 2006-04-23 05:34:22.25
Track: 77
Swath: I2
Mosaic: false
Medium: DVD
Processing Options: Processing: L0 (ASA_IM__0P),QualityOfService: STANDARD
Scene Type: Floating Scene
Scene Stop: 2006-04-23 05:34:22.24 Scene centre: +33°11'47" -116°02'33"
Selected Frame: 657

Mission: Envisat
Product: ASA_IM
Start: 2006-04-23 05:34:07.16
Orbit: 21674
Frame: 657
Pass: A
Order: true
Delivery: mail



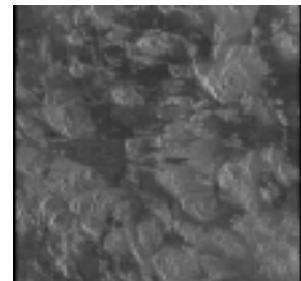
Id: 40
Sensor: ASAR/IM
Status: Archived
Stop: 2006-04-23 05:34:37.34
Track: 77
Swath: I2
Mosaic: false
Medium: DVD
Processing Options: Processing: L0 (ASA_IM__0P),QualityOfService: STANDARD
Scene Type: Floating Scene
Scene Stop: 2006-04-23 05:34:37.33 Scene centre: +34°05'11" -116°16'03"
Selected Frame: 675

Mission: Envisat
Product: ASA_IM
Start: 2006-04-23 05:34:22.25
Orbit: 21674
Frame: 675
Pass: A
Order: true
Delivery: mail



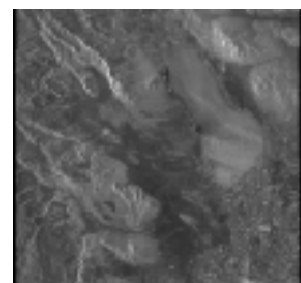
Id: 41
Sensor: ASAR/IM
Status: Archived
Stop: 2006-04-23 05:34:52.43
Track: 77
Swath: I2
Mosaic: false
Medium: DVD
Processing Options: Processing: L0 (ASA_IM__0P),QualityOfService: STANDARD
Scene Type: Floating Scene
Scene Stop: 2006-04-23 05:34:52.42 Scene centre: +34°58'35" -116°29'24"
Selected Frame: 693

Mission: Envisat
Product: ASA_IM
Start: 2006-04-23 05:34:37.34
Orbit: 21674
Frame: 693
Pass: A
Order: true
Delivery: mail



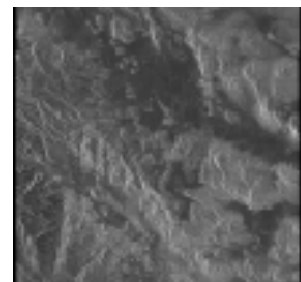
Id: 42
Sensor: ASAR/IM
Status: Archived
Stop: 2006-05-28 05:34:23.80
Track: 77
Swath: I2
Mosaic: false
Medium: DVD
Processing Options: Processing: L0 (ASA_IM__0P),QualityOfService: STANDARD
Scene Type: Floating Scene
Scene Stop: 2006-05-28 05:34:23.79 Scene centre: +33°11'47" -116°02'33"
Selected Frame: 657

Mission: Envisat
Product: ASA_IM
Start: 2006-05-28 05:34:08.71
Orbit: 22175
Frame: 657
Pass: A
Order: true
Delivery: mail



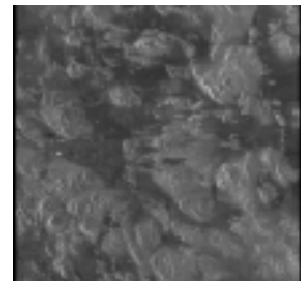
Id: 43
Sensor: ASAR/IM
Status: Archived
Stop: 2006-05-28 05:34:38.89
Track: 77
Swath: I2
Mosaic: false
Medium: DVD
Processing Options: Processing: L0 (ASA_IM__0P),QualityOfService: STANDARD
Scene Type: Floating Scene
Scene Stop: 2006-05-28 05:34:38.88 Scene centre: +34°05'11" -116°16'03"
Selected Frame: 675

Mission: Envisat
Product: ASA_IM
Start: 2006-05-28 05:34:23.80
Orbit: 22175
Frame: 675
Pass: A
Order: true
Delivery: mail



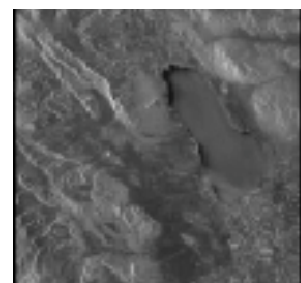
Id: 44
Sensor: ASAR/IM
Status: Archived
Stop: 2006-05-28 05:34:53.98
Track: 77
Swath: I2
Mosaic: false
Medium: DVD
Processing Options: Processing: L0 (ASA_IM__0P),QualityOfService: STANDARD
Scene Type: Floating Scene
Scene Stop: 2006-05-28 05:34:53.97 Scene centre: +34°58'35" -116°29'24"
Selected Frame: 693

Mission: Envisat
Product: ASA_IM
Start: 2006-05-28 05:34:38.89
Orbit: 22175
Frame: 693
Pass: A
Order: true
Delivery: mail



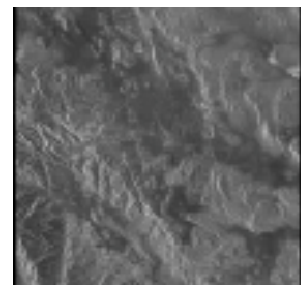
Id: 45
Sensor: ASAR/IM
Status: Archived
Stop: 2006-10-15 05:34:29.03
Track: 77
Swath: I2
Mosaic: false
Medium: DVD
Processing Options: Processing: L0 (ASA_IM__0P),QualityOfService: STANDARD
Scene Type: Floating Scene
Scene Stop: 2006-10-15 05:34:29.02 Scene centre: +33°11'47" -116°02'33"
Selected Frame: 657

Mission: Envisat
Product: ASA_IM
Start: 2006-10-15 05:34:13.94
Orbit: 24179
Frame: 657
Pass: A
Order: true
Delivery: mail



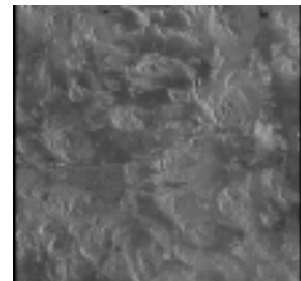
Id: 46
Sensor: ASAR/IM
Status: Archived
Stop: 2006-10-15 05:34:44.12
Track: 77
Swath: I2
Mosaic: false
Medium: DVD
Processing Options: Processing: L0 (ASA_IM__0P),QualityOfService: STANDARD
Scene Type: Floating Scene
Scene Stop: 2006-10-15 05:34:44.11 Scene centre: +34°05'11" -116°16'03"
Selected Frame: 675

Mission: Envisat
Product: ASA_IM
Start: 2006-10-15 05:34:29.03
Orbit: 24179
Frame: 675
Pass: A
Order: true
Delivery: mail



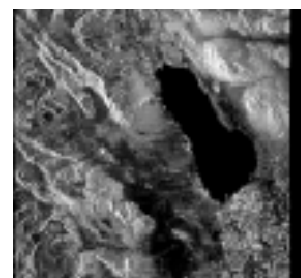
Id: 47
Sensor: ASAR/IM
Status: Archived
Stop: 2006-10-15 05:34:59.21
Track: 77
Swath: I2
Mosaic: false
Medium: DVD
Processing Options: Processing: L0 (ASA_IM__0P),QualityOfService: STANDARD
Scene Type: Floating Scene
Scene Stop: 2006-10-15 05:34:59.20 Scene centre: +34°58'35" -116°29'24"
Selected Frame: 693

Mission: Envisat
Product: ASA_IM
Start: 2006-10-15 05:34:44.12
Orbit: 24179
Frame: 693
Pass: A
Order: true
Delivery: mail



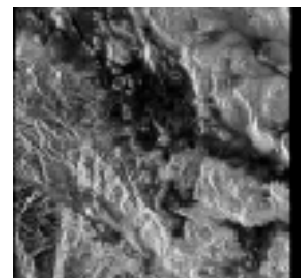
Id: 48
Sensor: ASAR/IM
Status: Archived
Stop: 2006-11-19 05:34:28.29
Track: 77
Swath: I2
Mosaic: false
Medium: DVD
Processing Options: Processing: L0 (ASA_IM__0P),QualityOfService: STANDARD
Scene Type: Floating Scene
Scene Stop: 2006-11-19 05:34:28.28 Scene centre: +33°11'47" -116°02'33"
Selected Frame: 657

Mission: Envisat
Product: ASA_IM
Start: 2006-11-19 05:34:13.20
Orbit: 24680
Frame: 657
Pass: A
Order: true
Delivery: mail



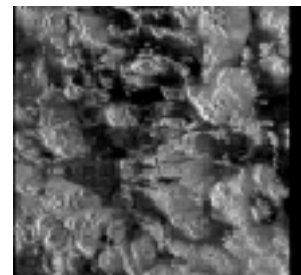
Id: 49
Sensor: ASAR/IM
Status: Archived
Stop: 2006-11-19 05:34:43.38
Track: 77
Swath: I2
Mosaic: false
Medium: DVD
Processing Options: Processing: L0 (ASA_IM__0P),QualityOfService: STANDARD
Scene Type: Floating Scene
Scene Stop: 2006-11-19 05:34:43.37 Scene centre: +34°05'11" -116°16'03"
Selected Frame: 675

Mission: Envisat
Product: ASA_IM
Start: 2006-11-19 05:34:28.29
Orbit: 24680
Frame: 675
Pass: A
Order: true
Delivery: mail



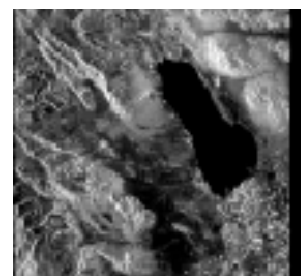
Id: 50
Sensor: ASAR/IM
Status: Archived
Stop: 2006-11-19 05:34:58.47
Track: 77
Swath: I2
Mosaic: false
Medium: DVD
Processing Options: Processing: L0 (ASA_IM__0P),QualityOfService: STANDARD
Scene Type: Floating Scene
Scene Stop: 2006-11-19 05:34:58.46
Selected Frame: 693

Mission: Envisat
Product: ASA_IM
Start: 2006-11-19 05:34:43.38
Orbit: 24680
Frame: 693
Pass: A
Order: true
Delivery: mail
Scene Start: 2006-11-19 05:34:43.38
Scene centre: +34°58'35" -116°29'24"



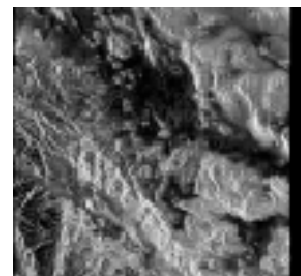
Id: 51
Sensor: ASAR/IM
Status: Archived
Stop: 2006-12-24 05:34:26.34
Track: 77
Swath: I2
Mosaic: false
Medium: DVD
Processing Options: Processing: L0 (ASA_IM__0P),QualityOfService: STANDARD
Scene Type: Floating Scene
Scene Stop: 2006-12-24 05:34:26.33
Selected Frame: 657

Mission: Envisat
Product: ASA_IM
Start: 2006-12-24 05:34:11.25
Orbit: 25181
Frame: 657
Pass: A
Order: true
Delivery: mail
Scene Start: 2006-12-24 05:34:11.25
Scene centre: +33°11'47" -116°02'33"



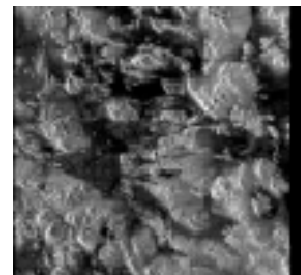
Id: 52
Sensor: ASAR/IM
Status: Archived
Stop: 2006-12-24 05:34:41.43
Track: 77
Swath: I2
Mosaic: false
Medium: DVD
Processing Options: Processing: L0 (ASA_IM__0P),QualityOfService: STANDARD
Scene Type: Floating Scene
Scene Stop: 2006-12-24 05:34:41.42
Selected Frame: 675

Mission: Envisat
Product: ASA_IM
Start: 2006-12-24 05:34:26.34
Orbit: 25181
Frame: 675
Pass: A
Order: true
Delivery: mail
Scene Start: 2006-12-24 05:34:26.34
Scene centre: +34°05'11" -116°16'03"



Id: 53
Sensor: ASAR/IM
Status: Archived
Stop: 2006-12-24 05:34:56.52
Track: 77
Swath: I2
Mosaic: false
Medium: DVD
Processing Options: Processing: L0 (ASA_IM__0P),QualityOfService: STANDARD
Scene Type: Floating Scene
Scene Stop: 2006-12-24 05:34:56.51
Selected Frame: 693

Mission: Envisat
Product: ASA_IM
Start: 2006-12-24 05:34:41.43
Orbit: 25181
Frame: 693
Pass: A
Order: true
Delivery: mail
Scene Start: 2006-12-24 05:34:41.43
Scene centre: +34°58'35" -116°29'24"



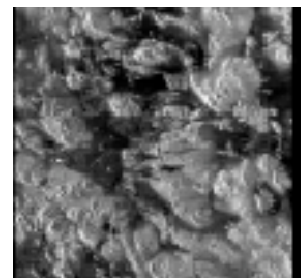
Id: 54
Sensor: ASAR/IM
Status: Archived
Stop: 2007-01-28 05:34:35.69
Track: 77
Swath: I2
Mosaic: false
Medium: DVD
Processing Options: Processing: L0 (ASA_IM__0P),QualityOfService: STANDARD
Scene Type: Floating Scene
Scene Stop: 2007-01-28 05:34:35.68
Selected Frame: 675

Mission: Envisat
Product: ASA_IM
Start: 2007-01-28 05:34:20.60
Orbit: 25682
Frame: 675
Pass: A
Order: true
Delivery: mail
Scene Start: 2007-01-28 05:34:20.60
Scene centre: +34°05'11" -116°16'03"



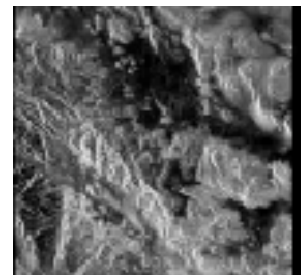
Id: 55
Sensor: ASAR/IM
Status: Archived
Stop: 2007-01-28 05:34:50.78
Track: 77
Swath: I2
Mosaic: false
Medium: DVD
Processing Options: Processing: L0 (ASA_IM__0P),QualityOfService: STANDARD
Scene Type: Floating Scene
Scene Stop: 2007-01-28 05:34:50.77
Selected Frame: 693

Mission: Envisat
Product: ASA_IM
Start: 2007-01-28 05:34:35.69
Orbit: 25682
Frame: 693
Pass: A
Order: true
Delivery: mail
Scene Start: 2007-01-28 05:34:35.69
Scene centre: +34°58'35" -116°29'24"



Id: 56
Sensor: ASAR/IM
Status: Archived
Stop: 2007-03-04 05:34:38.08
Track: 77
Swath: I2
Mosaic: false
Medium: DVD
Processing Options: Processing: L0 (ASA_IM_0P),QualityOfService: STANDARD
Scene Type: Floating Scene
Scene Stop: 2007-03-04 05:34:38.07
Selected Frame: 675

Mission: Envisat
Product: ASA_IM
Start: 2007-03-04 05:34:22.99
Orbit: 26183
Frame: 675
Pass: A
Order: true
Delivery: mail
Scene Start: 2007-03-04 05:34:22.99
Scene centre: +34°05'11" -116°16'03"



Id: 57
Sensor: ASAR/IM
Status: Archived
Stop: 2007-03-04 05:34:53.17
Track: 77
Swath: I2
Mosaic: false
Medium: DVD
Processing Options: Processing: L0 (ASA_IM_0P),QualityOfService: STANDARD
Scene Type: Floating Scene
Scene Stop: 2007-03-04 05:34:53.16
Selected Frame: 693

Mission: Envisat
Product: ASA_IM
Start: 2007-03-04 05:34:38.08
Orbit: 26183
Frame: 693
Pass: A
Order: true
Delivery: mail
Scene Start: 2007-03-04 05:34:38.08
Scene centre: +34°58'35" -116°29'24"

